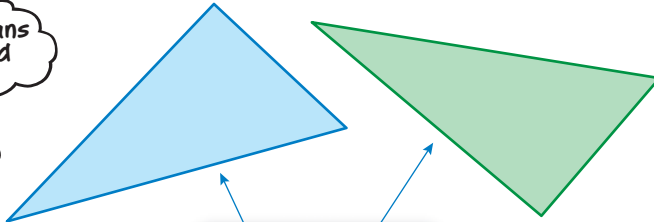


# Congruent Figures

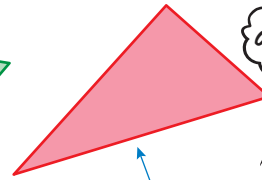
Name \_\_\_\_\_

## Key Concept and Vocabulary

Congruent means same size and shape.



same size and shape



Pointing different directions is okay.



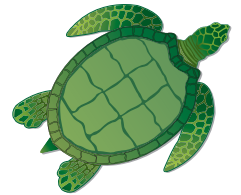
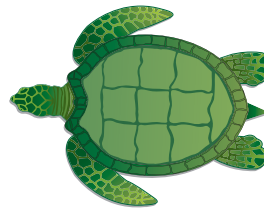
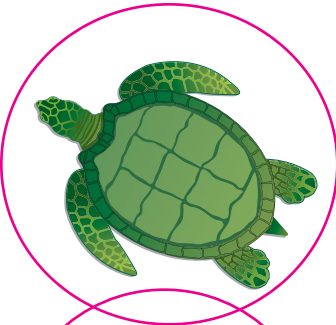
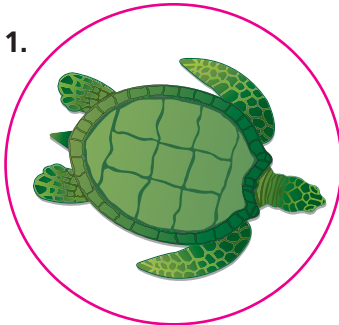
different size

## PRACTICE MAKES PURR-FECT™

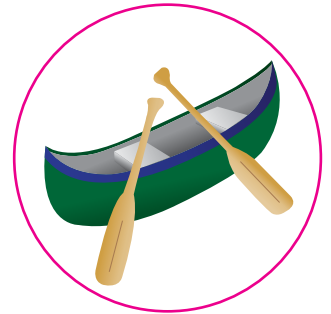
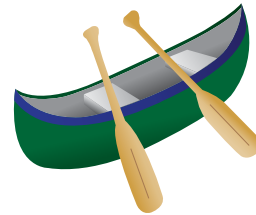
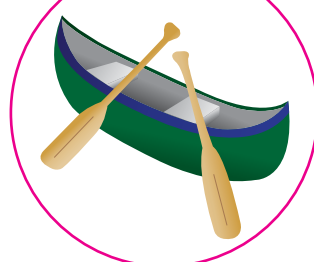
Check your answers at [BigIdeasMath.com](http://BigIdeasMath.com).

Circle the two figures that are congruent.

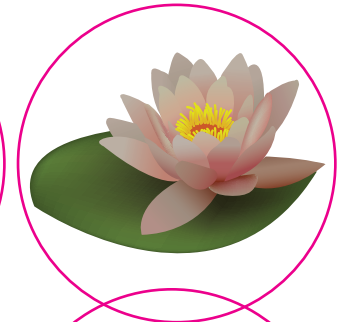
1.



2.



3.



4.

