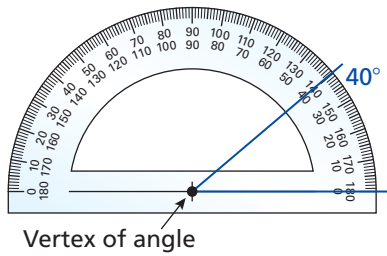


REVIEW: Using a Protractor

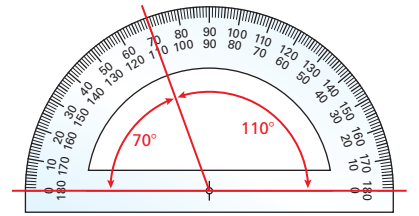
Name _____

Key Concept and Vocabulary



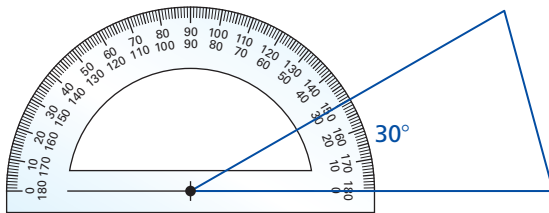
Visual Model

Protractors have 2 sets of numbers in opposite directions. When in doubt as to which to use, think "Should this angle be greater than or less than 90°?"



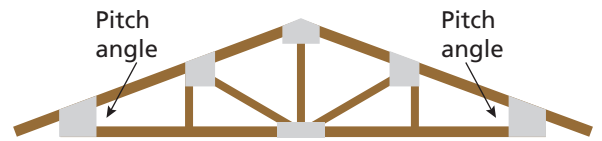
Skill Example

1. Measure an angle in a triangle.



Application Example

2. Measure the pitch angle of the roof.



••• The angle is about 20°.

PRACTICE MAKES PURR-FECT™

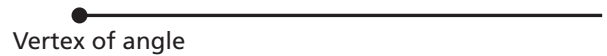


Check your answers at BigIdeasMath.com.

Draw an angle that has the given degree measure.

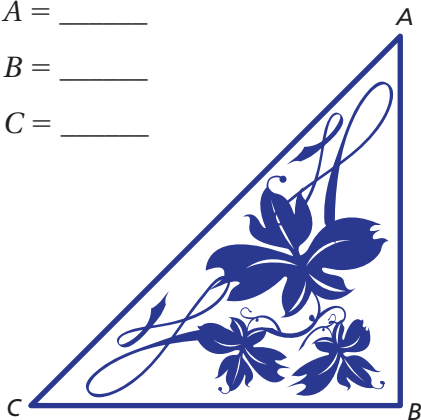
3. 35°

4. 60°



Measure each angle of the triangle. Check that the total is 180°.

5. $A = \underline{\hspace{2cm}}$
 $B = \underline{\hspace{2cm}}$
 $C = \underline{\hspace{2cm}}$



6. $A = \underline{\hspace{2cm}}$
 $B = \underline{\hspace{2cm}}$
 $C = \underline{\hspace{2cm}}$

